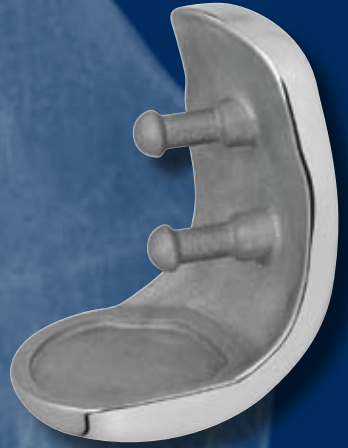


iUni™

Uni-Compartmental Knee Resurfacing



A Patient-Specific Approach


CONFORMIS

The ConforMIS iUni is a uni-compartmental implant designed for the treatment of moderate to severe osteoarthritis isolated to either the medial or lateral, as well as the patellofemoral compartment.

The iUni represents a significant advance in uni-compartmental implant technology. By utilizing our proprietary iFit™ 'image-to-implant' technology and data from a patient's CT scan, we customize an implant for each patient.

This personalized fit enables the implant to achieve precise anatomic alignment without the need for invasive bone cutting and resection.

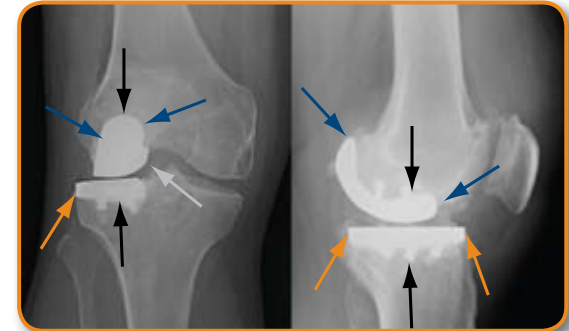
The accompanying patient-specific, disposable iJig™ pre-navigated instrumentation enables a simplified reproducible surgical technique.



A Minimally Traumatic, Bone Preserving Implant:

- Maximum bone preservation requiring only one femoral bone cut
- Joint preservation for future surgical intervention
- Viable option for young and active patients
- Potential for faster recovery and reduced post-operative pain

Improved Fit and Alignment:



- Complete femoral coverage
- Complete tibial coverage
- Optimal femoral and tibial component alignment
- No notch impingement, no ACL damage

Simplified Surgical Technique with iJig Pre-Navigated Instrumentation:



- Patient-specific, disposable instrumentation aligns precisely with the iUni implant
- Designed with built-in biomechanical axis and image guidance
- Improved OR efficiencies with no reprocessing or instrumentation handling

Indications

The ConforMIS iUni is intended for use in one compartment of the osteoarthritic knee, to replace the damaged area of the articular surface in patients with evidence of adequate healthy bone to support the components. Candidates for unicompartmental knee repair include those with joint impairment due to osteoarthritis or traumatic arthritis of the knee; previous tibial condyle or plateau fracture, creating loss of function; and valgus or varus deformity of the knee

Contraindications


- Active local or systemic infection
- Loss of bone or musculature, osteoporosis, neuromuscular or vascular compromise in the area of the joint to be operated to an extent that the procedure is unjustified
- Severe instability due to advanced loss of osteochondral structure or the absence of collateral or cruciate ligament integrity
- Severe (<30 degree) fixed valgus or varus deformity



Unique Solutions for Unique Patients


CONFORMIS
www.conformis.com

2 Fourth Avenue • Burlington, MA 01803
Tel: 781.860.5111 • Fax: 781.860.5108

 EU Regulatory Representative: Medical Device Safety Service
Burckhardstr 1, D-30163, Hannover, Germany
Phone: +49.0511.62628630, Fax: +49.0511.6262863